

INTERDISCIPLINARY COURSE AT THE UNIVERSITY OF TURKU

BIOL5320 Evolutionary applications:

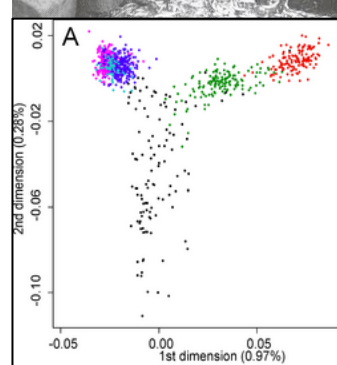
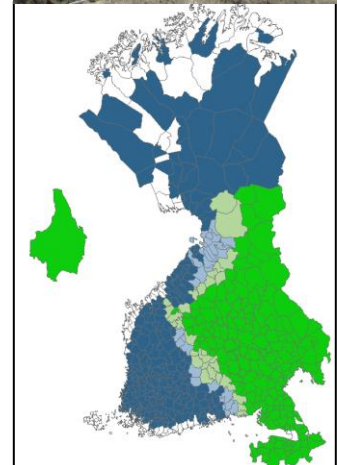
HUMAN EVOLUTION AND CULTURAL CHANGE IN MULTIDISCIPLINARY CONTEXT, 5 CP

(ASSOCIATED TO THE SEMINAR* ORGANISED IN NOVEMBER 1-2, 2018)

October 30th – December 18th 2018

- Aimed for both students and researchers interested in integrating human biological evolution and cultural history & change.
- You will learn basics of the subject matters in the lectures but also have hands-on practicals. The new skills will be applied in interdisciplinary team works during the course.
- The lectures and practicals are specifically designed for multidisciplinary students - you will be able to make it 😊
- If you participate outside from University of Turku, the team work can be done with conspecifics from your home university.
- The course can be accepted as part of studies in at least the majors of biology, geography, archaeology, Finnish language and Finno-Ugric languages and history in UTU. In other cases, please ask your home department/university.
- Web site coming in moodle.utu.fi!
- Enrollment: **UTU students** <https://nettiopsu.utu.fi/course/registration/100906/new>
Others: <https://tinyurl.com/yco4tlhg>
- Schedule and topics: see the next page
- Further questions to kirsty.maurits@utu.fi

Language of teaching will be selected (Finnish/English) based on the language skills of the participants.
The lectures will be live-streamed, but we strongly encourage to participate on the spot at least during the first and last meeting!



Time	Place	Teachers	Topic
Tue 30.10 at 11-14	Pub2	All	Introduction to the course <ul style="list-style-type: none"> - Introduction to the background material and to the home exam - Teaming up in transdisciplinary groups and planning of team works - <i>Practical: Theme-focused group discussions</i>
Thu 1.11. at 10-17	Natura IX	please see www.bedlan.net	SEMINAR DAY. <i>Principles for transdisciplinary work of human past.</i> (Also streamed in internet, and recorded, later available in Moodle.)
(Fri 2.11.) (at 8.30-17)	Edu 1	for the program	SEMINAR DAY2: <i>State-of-the-art research from different disciplines</i> (not mandatory but warmly recommended! Also available streamed and recorded, but note that there are specific topics which are NOT streamed nor recorded!)
Mon 5.11 at 11-14	Pub1 Mauno Koivisto hall	Archeologists from UTU	Archaeology part 1 <ul style="list-style-type: none"> - Collecting, using and interpreting archaeological data - Problems of old archaeological data - <i>Practical: TBA</i>
Mon 12.11. at 11-14	Pub1 Mauno Koivisto hall	Archeologists from UTU	Archaeology part 2 <ul style="list-style-type: none"> - Archaeological view to the settlement phases of Finland - Perspectives to the recent archaeology-genetics discussion - <i>Practical: TBA</i>
Mon 19.11. at 11-14	Pub1 Mauno Koivisto hall	Fenno-Ugrists and phylogenetic linguists/biologists from UTU	Linguistics part 1 <ul style="list-style-type: none"> - Genealogy and typology of language families - Etymological studies: ALGU etymological database - Language change and linguistic divergence - <i>Practical: Language tree with Uralic languages family and MrBayes</i>
Mon 26.11. at 11-14	Pub1 Mauno Koivisto hall	Geographers from UTU	GIS-methods assisting in resolving the human past <ul style="list-style-type: none"> - Introducing GIS tools - <i>Practical: Making a map of Saami speaker area</i>
Tue 27.11. at 11-14	Pub2	Human evolutionary ecologists from UTU	Human evolutionary ecology <ul style="list-style-type: none"> - Life-history strategies in pre-industrial human society - <i>Practical: Statistical analyses</i>
Mon 3.12. at 11-14	Pub1 Mauno Koivisto hall	Fenno-Ugrists and phylogenetic linguists/biologists from UTU and Uppsala university	Linguistics part 2 <ul style="list-style-type: none"> - Contact linguistics: loan words, linguistic substrate, place names - Introducing databases (WALS, Grambank, place names) - <i>Practical: Linguistic contacts within Uralic languages; NeighborNet</i>
Tue 4.12. at 11-14	Pub2	Human evolutionary biologists from UTU and UH	Genetics part 1 <ul style="list-style-type: none"> - Introducing DNA, ancient and modern - <i>Practical: Data quality control with PLINK</i>
Tue 11.12. at 11-14	Pub2	Human evolutionary biologists from UTU and UH	Genetics part 2 <ul style="list-style-type: none"> - Population genetics - <i>Demo &Practical: Interpreting figures in genetic articles</i>
Tue 18.12. at 11-14	Natura sh 215	All	Final meeting: Presenting team works & feedback.